

# Comfort functions

For details, refer to pages 17 ~ 28 of the Instruction Manual.

## Auto Flush

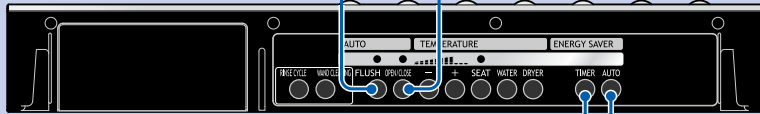
**FLUSH** When you leave, the toilet flushes automatically.

For troubleshooting, refer to pages 44 of the Instruction Manual.

## Auto Open/Close

**OPEN/CLOSE** The sensor detects a person and the lid automatically opens and closes.

For troubleshooting, refer to pages 42 of the Instruction Manual.



## Timer Energy Saver

**TIMER** Once set, the seat heater turns off at the preset hour everyday to save power. (You can choose the duration of power save mode from 3, 6 or 9 hours.)

**Example** To save power for 6 hours. (1:00~7:00 a.m.)

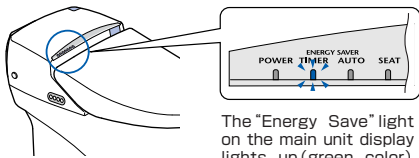
**TIMER** Press the **TIMER** button at the desired power-save start time. (1:00 a.m.)

**TIMER** Select "6" for the power-saving time.

**Finish**

Power save mode starts.

## Main Unit Display



The "Energy Save" light on the main unit display lights up (green color) when the energy saving function is On.

## Auto Energy Saver

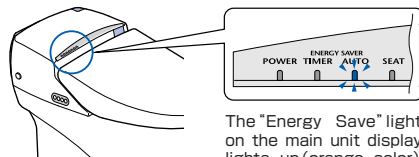
**AUTO** The Neorest begins keeping track of when the unit is used. At times when the unit is infrequently used, the heater will be powered down into energy save mode.

**AUTO** Press this button.

**Finish**

Memory power save mode starts.

## Main Unit Display



The "Energy Save" light on the main unit display lights up (orange color) when the energy saving function is On.

The timer energy saver and auto energy saver functions can be used simultaneously.

# TOTO

# NEOREST 600

## How to use

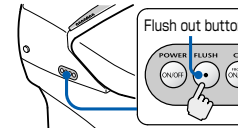
For details, refer to pages 13 and 14 of the Instruction Manual.

### Flushing

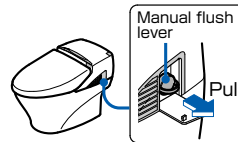
**FLUSH**

The toilet can be flushed with the remote controller.

- When the remote controller battery has run down use the side controls.

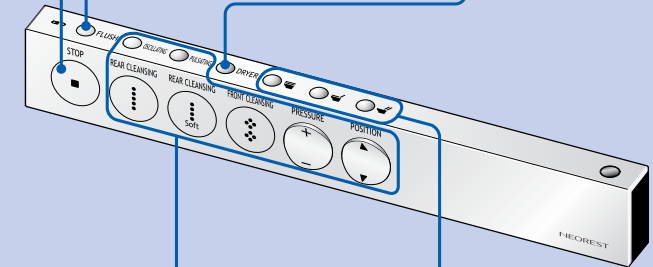


- In case of a power failure use the manual flush lever.



### Stopping

**STOP** To stop washing and drying.



### Drying

**DRYER** Blows warm air to dry the user.

### For adjusting water pressure and wash position

**REAR CLEANSING** To wash the rear.

**REAR CLEANSING** To wash the rear with a gentle spray of water.

**FRONT CLEANSING** For front wash.

**PRESSURE** **POSITION**

Water pressure and wash position are adjusted with these buttons. Water pressure and washing position will be restored to the standard pressure and position when more than 5 minutes elapse after adjustment.

### Comfortable washing

**OSCILLATING** The wand moves back and forth.



**PULSATING** The water pressure changes for a massaging wash.

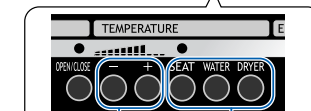


### Temp. adjust

Unhook the remote controller for use.

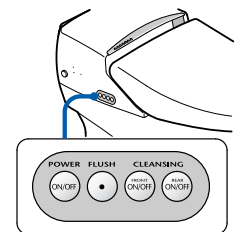
Press the temperature change buttons and use the temperature select buttons.

### Back of the remote controller



Temperature select buttons Temperature change buttons

### Main control panel



Secondary controls

For details, refer to page 15 of the Instruction Manual.

# Caring for your NEOREST

## Toilet seat, lid

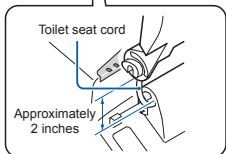
For details, refer to pages 31 and 32 of the Instruction Manual.

### Removing

- 1 Open the lid at a 90° angle, grasp with both hands and lift straight up.



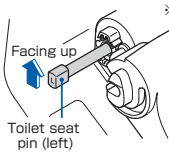
- 2 Open the toilet seat at a 90° angle, grasp with both hands and lift straight up.



※ The toilet seat cord is about 2 inches. Do not pull on the seat cord as it may damage the cord.

### Reattaching

- 1 Make certain that the toilet seat pins are facing up.



- 2 Insert the toilet seat straight over the toilet seat pins.



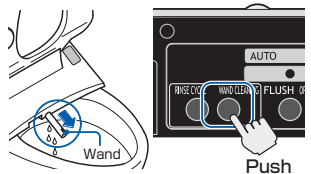
- 3 Grasp the lid with both hands and insert straight down over the toilet seat pins.



For details, refer to page 36 of the Instruction Manual.

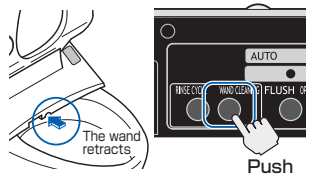
## Cleaning the wand

### Extending the wand



- Push the **WAND CLEANING** button on the remote controller.

### Retracting the wand



- Push the **WAND CLEANING** button on the remote controller again.

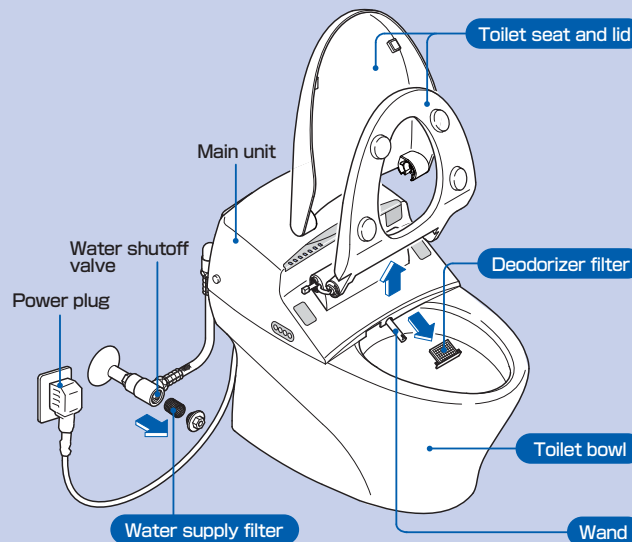
## Before cleaning

Turn OFF the **AUTO FLUSH OPEN/CLOSE** before cleaning.

Otherwise, auto-flush or auto-open/close functions may activate during cleaning.

## Tips for cleaning NEOREST

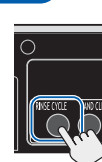
- Each component can be disassembled for thorough cleaning.
- Wet and wring out a soft cloth for wiping the seat, lid and wand.
- Use a small brush, such as a toothbrush to remove any dirt that is clogged in the filter.



For details, refer to page 37 of the Instruction Manual.

## Toilet bowl

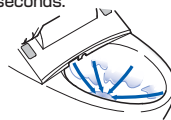
- 1 Push the **RINSE CYCLE** button on the remote controller.



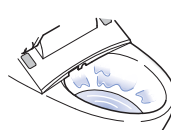
- 2 Water swirls to wash the bowl for 30 seconds.



- 3 The siphon lasts 30 seconds.



- 4 The toilet then refills.



Clean the inside of the toilet bowl with detergent. Press the **RINSE CYCLE** button to start the wash mode before detergent stands for 3 minutes.

For your safety, be sure to inspect your Neorest 600 occasionally.

- Is the power plug abnormally hot?
- Is the power plug covered with dust?
- Is the outlet loose?
- Is your Neorest 600 operating differently than usual?

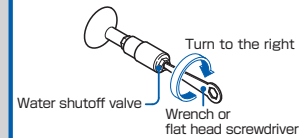
\* In case anything is abnormal, contact TOTO USA to prevent a fire or an electrical shock.

## Water supply filter

For details, refer to pages 34 and 35 of the Instruction Manual.

### Removing

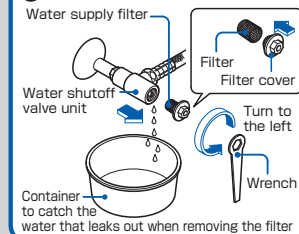
- 1 Shut off the water valve and turn off the water supply.



### Caution!

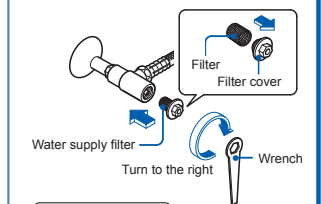
Do not remove the water supply filter with the water shutoff valve in the OPEN position to prevent sudden water discharge.

- 2 Remove the water supply filter.



### Reattaching

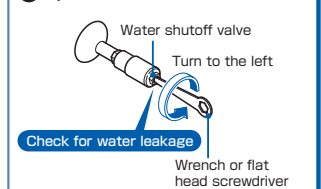
- 1 Reattach the water supply filter.



### Caution!

Be sure to tighten the water supply filter securely. A loose filter may result in water leakage.

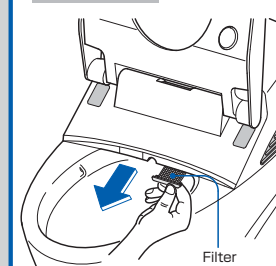
- 2 Open the water shutoff valve.



For details, refer to page 33 of the Instruction Manual.

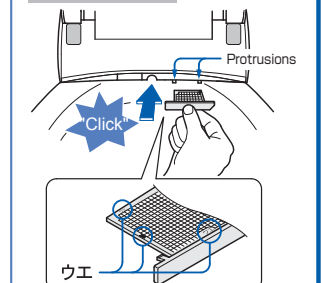
## Deodorizer filter

### Removing



- Pull the filter (gray) forward.

### Reattaching



- Look for the "ウエ" markings on the top of the filter.