



**Low Consumption
Wall Hung Closet Combination
Vitreous China**

FEATURES

• **3217 Rexmont™ Combination**

Bowl: 3171 1.5 Rexmont™ elongated rim vitreous china (1.6 gpf / 6.0 lpf) siphon action, wall mounted with back outlet.

Tank: 3740 Galaxy Elite™ vitreous china tank and cover with flushvalve, float valve with backflow preventer and trip lever.

Supply:

Seat:

Color:

NOTES

- Fixture conforms to ANSI/ASME A112.19.2M and CSA B-45 standards.
- Fixture complies with Americans With Disabilities Act when mounted at rim height of 17" [432].
- Also available with right hand trip lever tank, model number 3741.
- Fully glazed trapway.

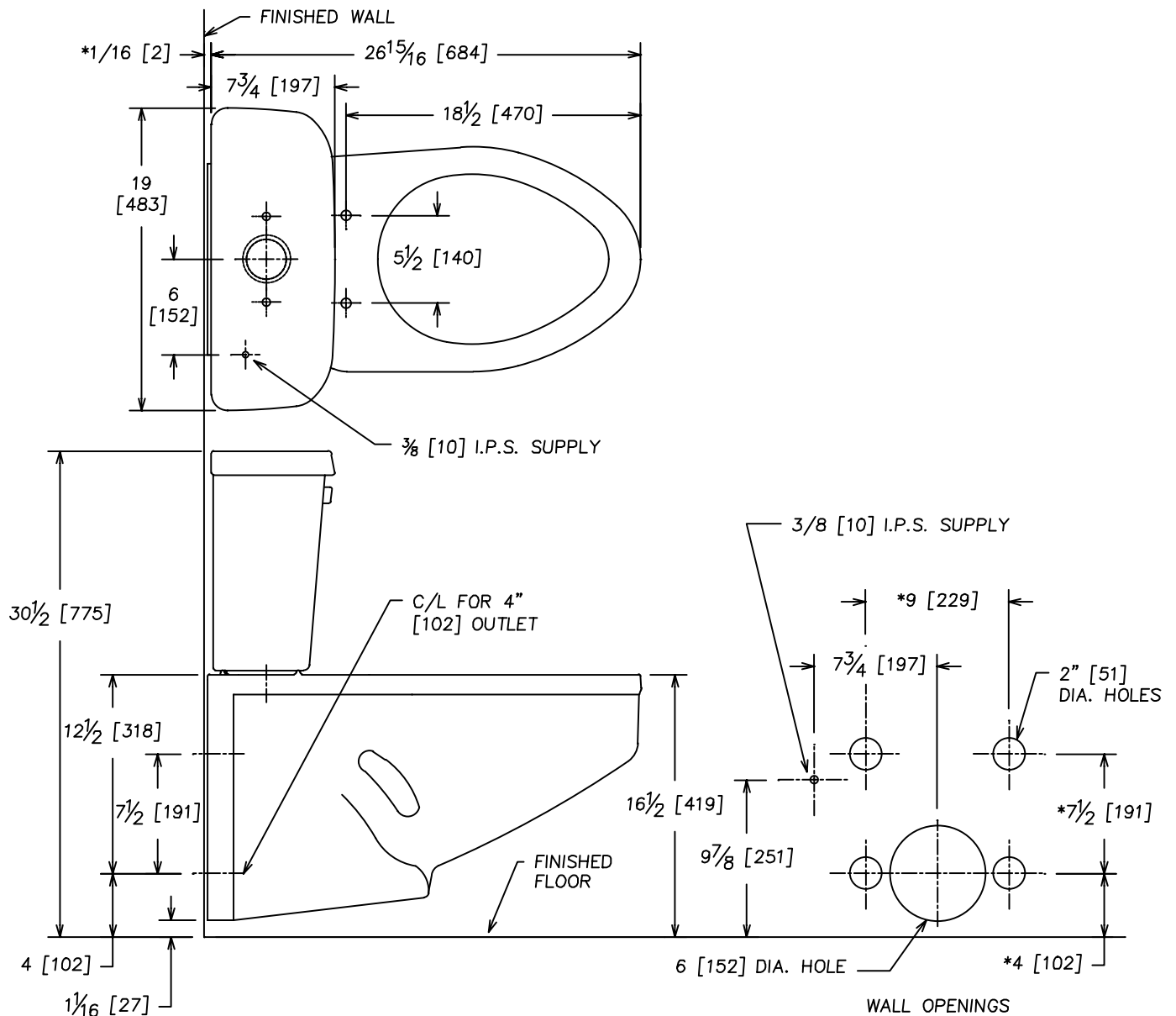
WATER ECONOMY FACTS

Average Gallons Per Flush	20 PSI	50 PSI	80 PSI
3217 Rexmont (gpf)	1.50	1.56	1.57
3217 Rexmont (lpf)	5.67	5.90	5.93
Trapway.....	1 5/8" [42]		
Water Surface.....	5 1/4" [133] x 7 1/4" [184]		
Water Seal.....	2 7/16" [62]		



**CRANE
PLUMBING**
Universal-Rundle





NOTES: ROUGHING-IN DIMENSIONS FOR CLOSET SUPPORTING UNIT TO BE OBTAINED DIRECT FROM MANUFACTURER. CHECK WITH MANUFACTURER FOR PROPER OUTLET COUPLING EXTENSION BEYOND FINISHED WALL. FOR OUTLET CONNECTION USE NEOPRENE OR RUBBER GASKETS. NOT FOR USE WITH A WAX RING.

* THESE DIMENSIONS MUST BE MAINTAINED FOR PROPER INSTALLATION.

** FIXTURE COMPLIES WITH AMERICANS WITH DISABILITIES ACT WHEN MOUNTED AT RIM HEIGHT OF 17" [432].